









Triscreen 3%, 5%, 10%



Triscreen 3%, 5%, 10%

Composition	DIN 60 001		Glass fibre, PVC coated (35% Glas fibre, 65% PVC)
Fabric weight (g/m ²)	DIN EN 12127		450 (3%), 430 (5%), 390 (10%)
Fabric thickness (mm)	DIN ISO 2286-3		0.60
Fabric width (cm)			250
Eco-tex Standard 100	LYC 05-2714 ASQUAL		Yes
Flame retardant			M1 (NF P 92501-7)
Colour fastness	DIN ISO 105-B02		7-8
Applicable in humid areas			Yes
Washing instructions			

Opening factors 3/5/10%: These coefficients indicate the openings in the fabric.

Solar and optical coefficients (DIN EN 410) All coefficients may have a tolerance of +/- 5%.

Colour	Triscreen 3%							Triscreen 5%							Triscreen 10%						
	008	009	064	065	076	077	094	008	009	064	065	076	077	094	008	009	064	065	076	077	094
T_v	9.02	20.41	18.77	7.72	5.42	4.35	11.61	13.18	22.78	22.93	10.14	6.94	7.44	12.59	19.86	28.30	26.08	12.05	11.48	13.27	18.86
R_v	66.82	77.19	70.87	54.69	48.71	54.65	63.25	63.53	74.72	66.63	54.62	50.31	52.91	65.24	61.95	69.67	64.26	58.77	53.20	54.84	63.55
A_v	24.16	2.40	10.36	37.59	45.87	41.00	25.14	23.29	2.50	10.44	35.24	42.75	39.65	22.17	18.19	2.03	9.66	29.18	35.32	31.89	17.59
T_s	11.01	20.77	20.34	8.39	5.51	4.98	14.02	14.97	22.88	24.06	10.80	7.07	8.49	15.12	21.60	28.87	27.43	12.56	11.85	13.90	21.28
R_s	58.62	67.02	62.30	47.31	41.34	47.25	55.50	55.51	64.52	58.42	47.10	42.68	46.13	57.66	54.29	60.38	55.96	50.54	45.66	47.46	56.38
A_s	30.37	12.21	17.36	44.30	53.15	47.77	30.48	29.52	12.60	17.52	42.10	50.25	45.38	27.22	24.11	10.75	16.61	36.90	42.49	38.64	22.34
UV	2.49	2.16	2.43	3.28	3.38	2.21	3.00	4.00	4.47	5.46	5.25	4.02	4.30	4.03	8.83	8.85	7.88	5.92	6.22	7.46	6.09
g_{tot}	0.40	0.37	0.39	0.45	0.47	0.45	0.41	0.41	0.38	0.41	0.45	0.47	0.45	0.41	0.42	0.40	0.42	0.44	0.46	0.45	0.41
F_c	0.55	0.51	0.54	0.62	0.66	0.62	0.58	0.58	0.53	0.57	0.63	0.65	0.63	0.56	0.59	0.56	0.58	0.61	0.64	0.63	0.58

T_v Visible light transmission (%)

R_v Visible light reflectance (%)

A_v Visible light absorption (%)

UV UV transmission (%)

F_c Shading factor (pf EN 14501 2005)

T_s Solar transmission (%)

R_s Solar reflectance (%)

A_s Solar absorption (%)

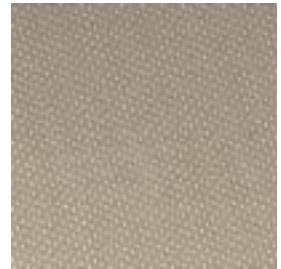
g_{tot} Total g-value (Glass g-value: 0,72; 1,6 W/m² K) DIN EN 13363-1



009



064



008



094



065



077



076