









Colorama 2 Bioactive



Colorama 2 Bioactive

Composition	DIN 60 001		100% Polyester, 50% of it Bioactive
Fabric weight (g/m ²)	DIN EN 12127		290
Fabric thickness (mm)	DIN ISO 2286-3		0.55
Fabric qualities			stiff or soft
Fabric width (cm)			200 (stiff), 340 (soft)
Flame retardant			B1 (DIN 4102), Type C (BS 5867), M2 (NF P 92501-7)
Colour fastness	DIN ISO 105-B02		5-7
Applicable in humid areas			Yes
Washing instructions			approx. 1% shrinking possible
Suitable for Wave®			Yes

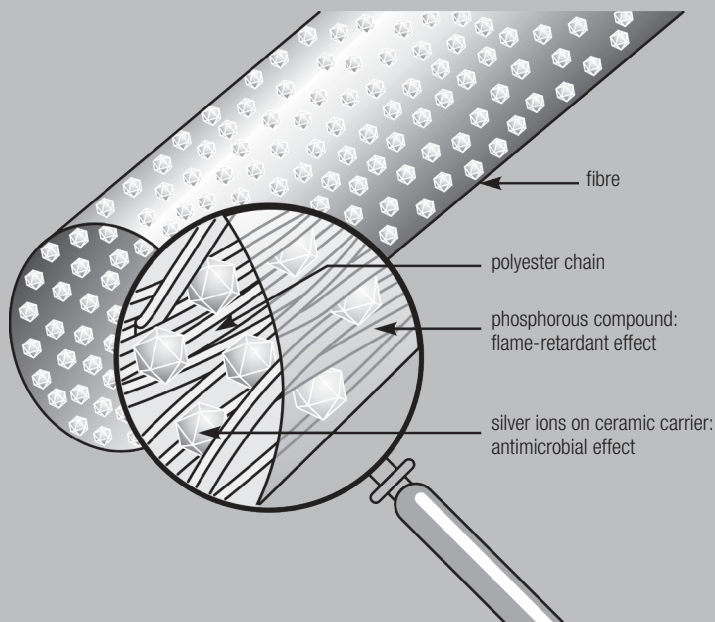
Colorama 2 Bioactive

This Silent Gliss fabric is made of Trevira CS and Trevira CS Bioactive yarns, and consists of 100% highly flame-resistant fibres that are tested for their burning behaviour and antimicrobial effects.

The main advantages of Colorama 2 Bioactive

1. Built-in safety concept for fire protection through the use of phosphorous compounds.
2. Germ resistance - Colorama 2 Bioactive uses silver to inhibit bacterial growth.
3. Lasting safety guaranteed, active ingredients are inherent within the fibres and will not wash out (see illustration).
4. Resistant to all disinfection methods.
5. Easy-care, strong, low-creasing and dimensionally stable.
6. Ecologically compatible.

Construction of Trevira CS Bioactive staple fibres:



The polymer from which Trevira's flame-retardant and antimicrobial fibres are spun has two important inherent functions:

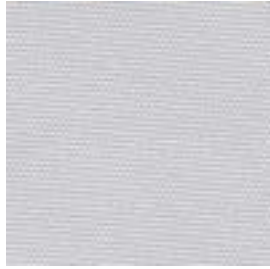
1. Phosphor connections are anchored firmly in the polyester chain for flame resistance.
2. Silver or silver ions for the antimicrobial effect are attached to ceramic carriers and firmly anchored in the fibre.

Applications:

Colorama 2 Bioactive is ideal for situations that require a higher level of fire protection, have special hygiene requirements and have a high throughput of visitors. Such buildings may include hospitals, nursing and retirement homes, public offices, schools, nursery schools etc.



10



20



30