








Colorama 1



Colorama 1

Composition	DIN 60 001		100% Polyester
Fabric weight (g/m ²)	DIN EN 12127		135
Fabric thickness (mm)	DIN ISO 2286-3		0.33
Fabric qualities			stiff or soft
Fabric width (cm)			200 (stiff), 340 (soft)
Flame retardant			B1 (DIN 4102), Type C (BS 5867), M2 (NF P 92501-7)
Colour fastness	DIN ISO 105-B02		5-7
Washing instructions			approx. 1% shrinking possible
Suitable for Wave®			Yes

Solar and optical coefficients (DIN EN 410) All coefficients may have a tolerance of +/- 5%.

Colour	400	401	402	404	405	406	407	408	409	410	411	413	414	415	416	418	420	421	422	423	427	428	429	433	436	437	438	439	440	441	442	443	444	446	447	448	460	463	469	476
T_v	52.91	51.51	54.39	35.66	31.37	19.37	36.57	41.41	17.52	55.27	23.74	31.08	51.32	49.10	34.67	46.11	19.33	43.55	37.25	23.10	13.01	29.28	37.85	20.97	30.53	25.67	43.18	45.29	50.50	47.84	22.35	28.62	22.01	30.61	19.92	37.17	46.11	36.11	37.96	
R_v	44.22	39.63	41.82	23.37	16.11	5.15	25.32	29.38	7.73	42.93	10.15	19.03	43.53	41.47	24.23	37.01	5.28	34.43	26.32	10.21	2.51	20.85	25.75	3.75	17.89	13.73	38.39	41.30	37.32	35.07	9.37	15.79	8.72	19	6.53	31.61	34.33	28.90	30.77	
A_v	2.87	8.86	3.79	40.97	52.52	75.48	38.11	29.21	77.73	1.80	66.11	49.89	5.15	9.43	41.10	16.88	75.39	22.02	36.43	66.69	84.48	49.87	36.40	75.28	51.58	60.60	18.43	13.41	12.18	17.09	88.28	55.59	69.27	50.39	73.55	31.22	19.56	34.99	31.27	
T_s	53.09	52.43	54.13	44.76	32.37	19.37	36.57	41.41	17.52	55.27	23.74	31.08	51.32	49.10	34.67	46.11	19.33	43.55	37.25	23.10	13.01	29.28	37.85	20.97	30.53	25.67	43.18	45.29	50.50	47.84	22.35	28.62	22.01	30.61	19.92	37.17	46.11	36.11	37.96	
R_s	44.75	40.61	41.60	33.16	30.36	25.48	38.11	29.21	77.73	42.42	28.97	43.14	50.64	48.04	34.10	16.88	75.39	22.02	36.43	66.69	84.48	49.87	36.40	75.28	51.58	60.60	18.43	13.41	12.18	17.09	88.28	55.59	69.27	50.39	73.55	31.22	19.56	34.99	31.27	
A_s	2.16	6.96	4.27	22.08	25.95	37.67	19.16	29.23	77.73	2.53	31.53	49.89	6.89	11.82	44.10	11.15	75.39	22.02	36.43	66.69	84.48	49.87	36.40	75.28	51.58	60.60	18.43	13.41	12.18	17.09	88.28	55.59	69.27	50.39	73.55	31.22	19.56	34.99	31.27	
UV	51.50	41.36	45.67	27.08	28.54	18.31	31.83	29.23	77.73	47.36	27.10	31.27	38.52	33.37	30.87	34.55	20.12	31.08	25.20	21.88	15.79	19.89	34.25	25.30	25.10	25.89	24.66	36.06	43.15	44.21	42.36	20.70	27.65	22.27	28.76	23.67	32.16	38.54	35.03	33.97
g_{tot}	0.49	0.51	0.50	0.54	0.55	0.57	0.53	0.53	0.56	0.50	0.55	0.53	0.50	0.50	0.53	0.51	0.56	0.52	0.53	0.55	0.57	0.53	0.53	0.58	0.75	0.75	0.71	0.68	0.71	0.70	0.71	0.77	0.75	0.77	0.74	0.78	0.71	0.71	0.71	0.71
F_c	0.68	0.70	0.70	0.74	0.76	0.79	0.73	0.74	0.78	0.69	0.77	0.74	0.69	0.70	0.74	0.70	0.78	0.72	0.74	0.76	0.79	0.74	0.73	0.80	0.75	0.75	0.71	0.68	0.71	0.70	0.71	0.77	0.75	0.77	0.74	0.78	0.71	0.71	0.71	0.71

T_v Visible light transmission (%)

R_v Visible light reflectance (%)

A_v Visible light absorption (%)

UV UV transmission (%)

F_c Shading factor (pf EN 14501 2005)

T_s Solar transmission (%)

R_s Solar reflectance (%)

A_s Solar absorption (%)

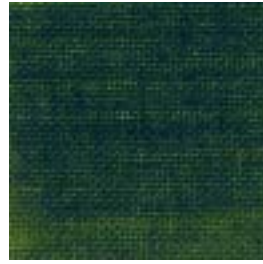
g_{tot} Total g-value (Glass g-value: 0,72; 1,6 W/m² K) DIN EN 13363-1



411



447



443



427



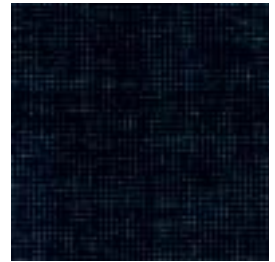
429



413



448



409



476



469



445



446



441



460



416



433



400



414



415



408



410



440



442



407



402



439



418



436



401



463



421



438



404



428



422



423



406



405



437



420