









Base



Base

Composition	DIN 60 001		100 % Polyester
Fabric weight (g/m ²)	DIN EN 12127		140
Fabric thickness (mm)	DIN ISO 2286-3		0.38
Louvre width (mm)			89, 127
Flame retardant			B1 (DIN 4102), M1 (NF P 92501-7)
Colour fastness	DIN EN ISO 105-B02		5-6
Applicable in humid areas			Yes
Washing instructions			

Solar and optical coefficients (DIN EN 410) All coefficients may have a tolerance of +/- 5%.

Colour	50	51	53	56	59
T_v	47	34	30	15	51
R_v	49	33	28	6	48
A_v	4	33	42	79	1
T_s	47	42	41	33	50
R_s	49	41	39	29	49
A_s	4	17	20	38	1
UV	32	24	24	18	41
g_{tot}	0.46	0.50	0.51	0.55	0.47

T_v Visible light transmission (%)

R_v Visible light reflectance (%)

A_v Visible light absorption (%)

UV UV transmission (%)

T_s Solar transmission (%)

R_s Solar reflectance (%)

A_s Solar absorption (%)

g_{tot} Total g-value (Glass g-value: 0,72; 1,6 W/m² K) DIN EN 13363-1



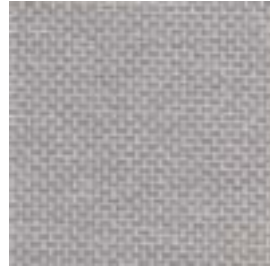
59



50



51



53



56